

QT 130

Exchangeable Thru Hull

The QT130 LED underwater light features exchangeable inserts. This allows servicing and upgrades without the hassle of hauling your boat. With a massive 20,000 lumens of light output and it's 90° degree beam angle the QT130 LED is recommended for boats 65+ feet, installing each fixture 3 - 9 feet apart for the best illumination. Easily upgradeable from existing lighting fixtures, the QT130 is designed with an industry standard 4" hole cutout.

The housing, which has been in production for 25 years with zero failures, is also used in the Large Screwed Bullyt and UL Ti MATE 130 HID and competitor fixtures which can all be upgraded to the QT130 LED by changing the insert. Built with anodized aluminium and Nickel plated bronze. Supplied with an IP68 junction box for seamless installation.



Maintenance
Inside the hull



Control - Single Color
On / Off Switch



Control - Color Change
DMX



Driver
External



Growth Resistance Lens
Borosilicate Glass



Power
110 - 240vAC



Installation
Thru Hull

Hull Material
GRP / Fiberglass



Boat Size
65 ft / 20m +



Hole Cut Out
4" / 101mm



Lumens
Up to 25,000



Kelvin
6,500



Beam Angle
90°



IPX8
Underwater
RATED



QT I 30

Exchangeable Thru-Hull

Mounting

Hull Material	GRP / Fiberglass
Boat Size	65+ Feet (20+m)
Spacing	3' - 9' (1 - 3m) Transom 5' - 15' (1.5 - 5m) Port and Starboard
Beam Angle	90°
Installation Angles	Flush

Technical

Per Fixture

Lumens - max on single color	20,000
Kelvin - white light only	6,500
Typical LED Life Expectancy	40,000 hrs
Min-Max Operating Voltage	110-240 VAC
Current / Amp draw	1.4 - 0.7A
Driver Type	External
Driver Output	White / Blue = 55vDC @ 2.8A Color Change = 4 channels @ 1A
Control Options	White/ Blue = On / Off Switch Color Change = DMX
Bonding	Locking Ring

Physical

Per Fixture

Max Hull Thickness	3 3/4" (95mm)
Length of Fixture	5 29/32" (150mm)
Diameter of Fixture	5 1/8" (130m)
Profile (height) of Fixture	9/32" (7mm)
Removal Space Required	5 29/32" (150mm)
Total Weight	13lbs
Single Color Driver Dimensions (L x W x H)	8 11/16" x 4 3/4" x 3 1/2" (220 x 120 x 90mm)
Color Change Driver Dimensions (L x W x H)	10 1/4" x 6 5/16" x 3 1/2" (260 x 160 x 90mm)
Cable Length	White / Blue = 13' (4M) Color Change = 10' (3M) Custom cable length available - max 6m
Hole Cut-out	4" (101mm)
Material	Nickel Plated AB2 Bronze
Growth Resistant Lens	Borosilicate Glass



Color

Part Number

White



QT130WHP3

Blue

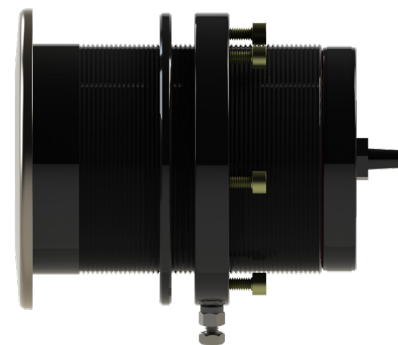


QT130BHP

RGBW



QT130RGBW

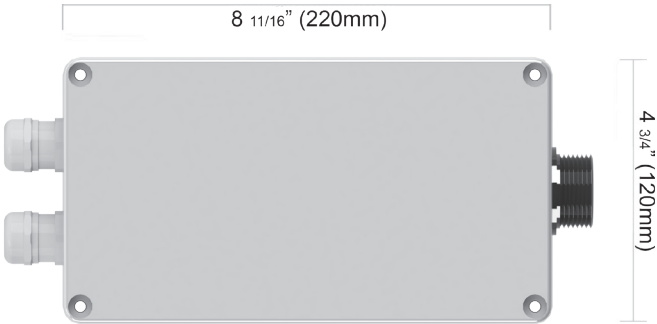


QT I 30

Exchangeable Thru-Hull

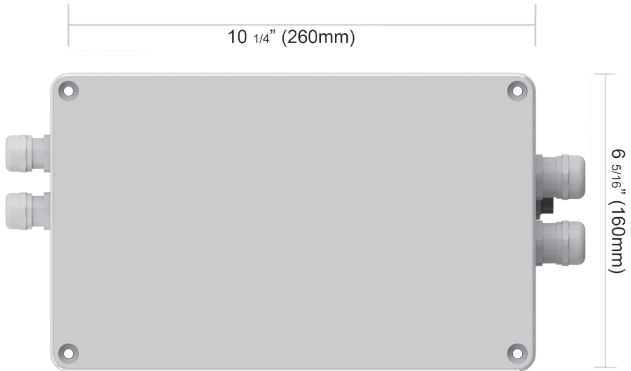
Driver Specifications - QT130 - HP3 White

Length of box	8 11/16" (220mm)
Length overall w/ plugs	12 19/32" (320mm)
Width of box	4 3/4" (120mm)
Height of box	3 1/2" (90mm)
IP rating	67 with blanking plugs / seals
Mounting	4 x screws through base, accessible under lid
Input voltage	100-240vAC
Internal Fuse	5 Amp
Box Material	Power Coated Aluminium



Driver Specifications - QTS 130 - RGBW Color Change

Length of box	10 1/4" (260mm)
Length overall w/ plugs	13" (330mm)
Width of box	6 5/16" (160mm)
Height of box	3 1/2" (90mm)
IP rating	67
Mounting	4 x screws through base, accessible under lid
Input voltage	100-240vAC
Internal Fuse	5 Amp
Box Material	Powder Coated Aluminium



Underwater Lights Limited

UK Design and Production

The Great Dunton Forge, London Road,
Dunton Green, Sevenoaks, Kent, TN13 2TD UK.
T: +44 (0) 1732 455753 • F: +44 (0) 1732 743233

USA Sales Office

2830 W State Rd 84, Suite 107
Fort lauderdale, Florida, 33312, USA.
T: +1 954 604 4024

E: uwl@underwaterlights.com

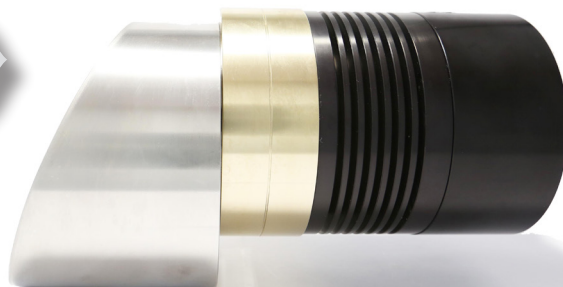
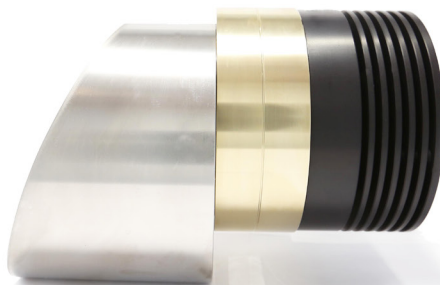
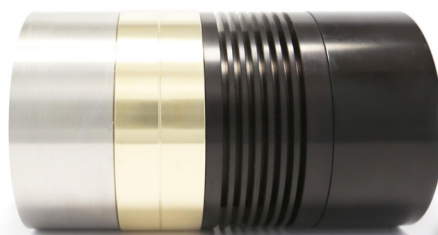
www.underwaterlights.com

QT75

Weld-in

The QT75 LED underwater light features single color or color change technology utilizing the entire color spectrum, which produces over 16 million color choices to create just the right mood. The smallest weld-in design on the market (up to 50° angling). Never feel trapped by this weld-in fixture. The exchangeable projector allows servicing and upgrades without the hassle of hauling your boat. With it's 90° degree beam angle the QT75 LED is recommended for Steel and Aluminum hull boats 90+ feet LOA.

With complete Lloyd's Register Approval, GL and ABS Design Appraisal on all components, the QT75 has been installed on some of the largest and most prestigious Superyachts in the World. The QT75 is a completely customizable underwater lighting solution for larger yachts. We offer a bespoke design service tailored for each individual hull.



Hull Material
Aluminium / Steel



Boat Size
90+ ft/ 20+ m



Lumens
Up to 25,000



Kelvin
6,500



Beam Angle
90°



Maintenance
Inside the hull



Control Options
On / Off Switch



Driver
External



Growth Resistance Lens
Borosilicate Glass



Power
110 - 240vAC



Installations
Weld In

IPX8
Underwater
RATED

